

DO NOT SCALE FROM THIS DRAWING. USE FIGURED DIMENSIONS IN ALL CASES. VERIFY DIMENSIONS ON SITE AND REPORT ANY DISCREPANCIES TO THE ARCHITECTS IMMEDIATELY. THIS DRAWING IS TO BE READ IN CONJUNCTION WITH THE ARCHITECTS SPECIFICATION. © THIS DRAWING IS COPYRIGHT AND MAY ONLY BE REPRODUCED WITH THE ARCHITECT'S PERMISSION.

REV	DATE	DRN	ISSUE
P01	2020.12.04	A.Olalla	Issued for Planning

ORIGINAL SHEET SIZE = A3

NOTES

Apartment Scheme

Ground Floor	9 units
First Floor	17 units
Second Floor	17 units
Third Floor	17 units


Total = 60 Units

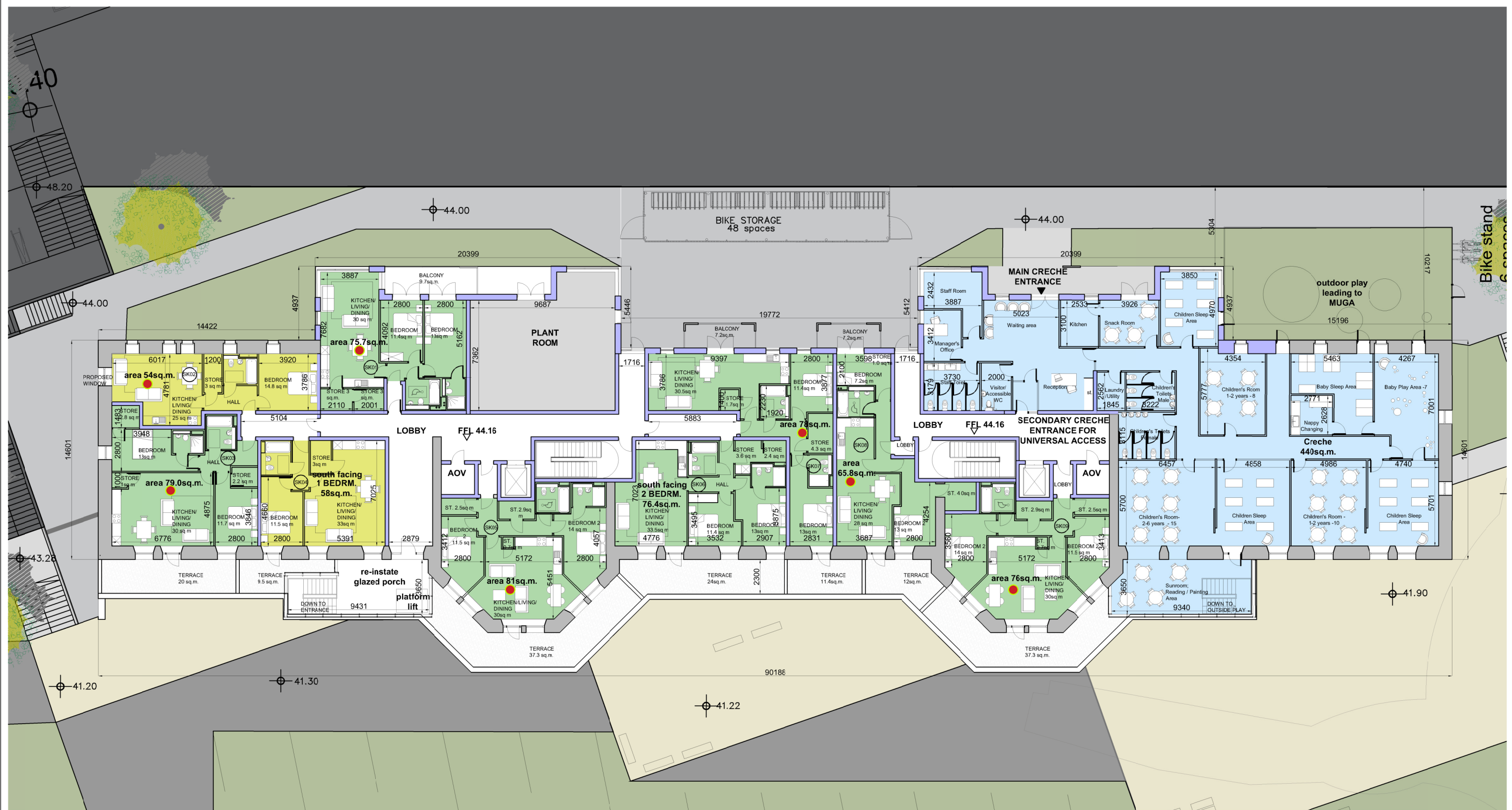
Total No. of 1 Bedrm. Units = 26 Units

Total No. of 2 Bedrm. Units = 34 Units

Dual Aspect Unit

PLANNING	
JOB St. Kevin's Strategic Housing Development At the former St. Kevin's Hospital and Grounds Shanakiel, Cork	
CLIENT Land Development Agency	
DRAWING Proposed Basement Floor Plan	
DATE 2020.12.04	SCALE 1:250
DRN. A.Olalla	CHECKED P.Mulligan

 Reddy Architecture + Urbanism Cork Office, Douglas Business Centre, Carrigaline Road Douglas, Co. Cork T: +353 (0)21 4362922 W: www.reddyarchitecture.com E: cork@reddyarchitecture.com	
DWG NO. P19-194C-RAU-00-B1-DR-A-31739	REVISION P01



DO NOT SCALE FROM THIS DRAWING. USE FIGURED DIMENSIONS IN ALL CASES. VERIFY DIMENSIONS ON SITE AND REPORT ANY DISCREPANCIES TO THE ARCHITECTS IMMEDIATELY. THIS DRAWING IS TO BE READ IN CONJUNCTION WITH THE ARCHITECTS SPECIFICATION. © THIS DRAWING IS COPYRIGHT AND MAY ONLY BE REPRODUCED WITH THE ARCHITECT'S PERMISSION.

REV	DATE	DRN	ISSUE
P01	2020.12.04	A.Olalla	Issued for Planning

NOTES

Legend

- EXISTING STRUCTURE RETAINED
- NEW PARTY WALLS
- 1 BEDRM.
- 2 BEDRM.
- CRECHE
- PLANT ROOM

Apartment Scheme

Ground Floor	9 units
First Floor	17 units
Second Floor	17 units
Third Floor	17 units
Total =	60 Units
Total Floor area	5943sq.m.



Dual Aspect Unit



Total No. of 1 Bedrm. Units = 26 Units



Total No. of 2 Bedrm. Units = 34 Units

Total No. of Dual Aspect Units = 43 Units
Total No. of Single Aspect South facing units = 17 Units

PLANNING

JOB	St. Kevin's Strategic Housing Development At the former St. Kevin's Hospital and Grounds Shanakiel, Cork
CLIENT	Land Development Agency
DRAWING	Proposed Ground Floor Plan
DATE	2020.12.04
DRN.	A.Olalla
SCALE	1:250
CHECKED	P.Mulligan

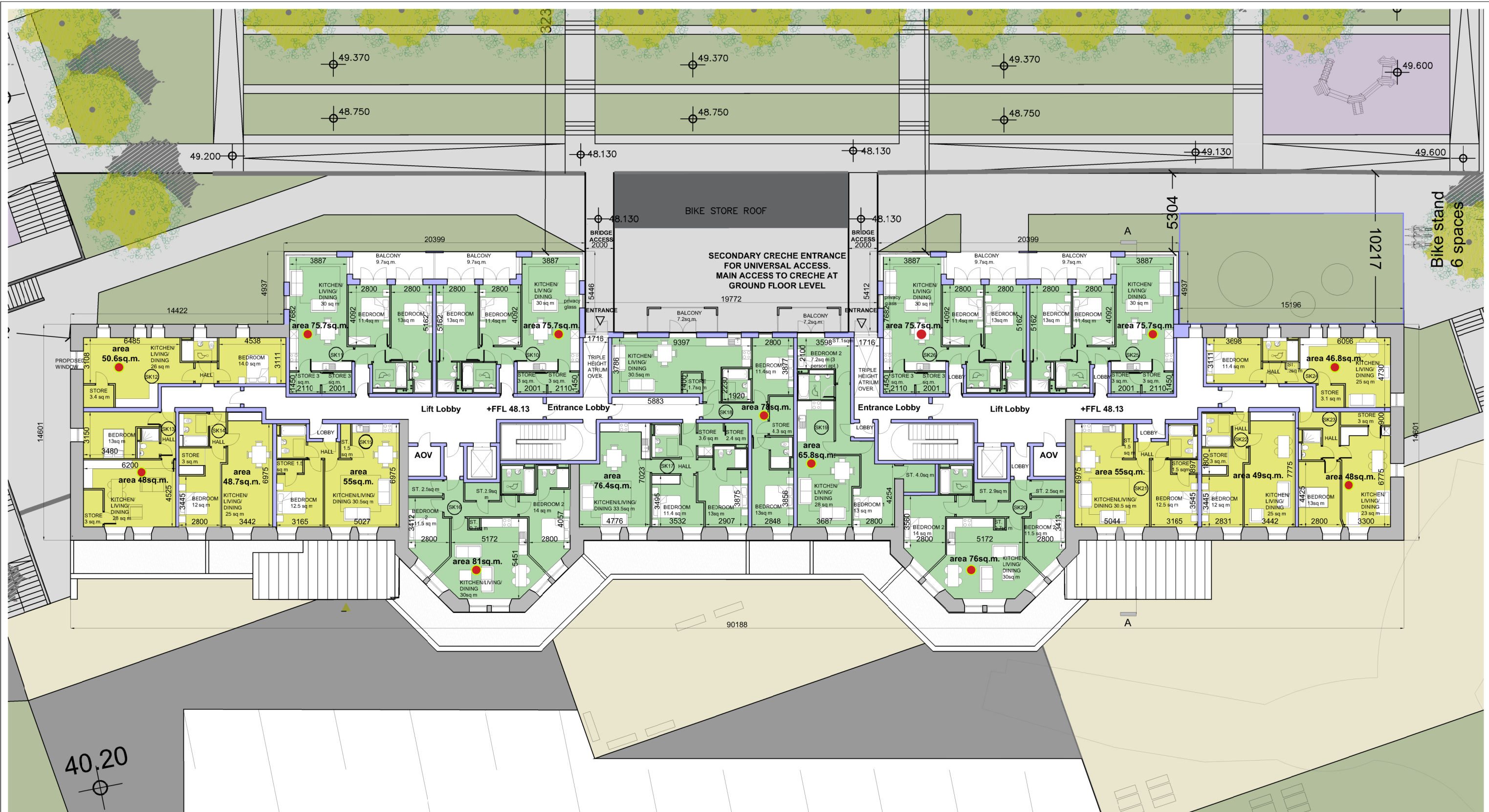


reddyarchitecture+urbanism

Reddy Architecture + Urbanism
Cork Office,
Douglas Business Centre, Carrigaline Road Douglas, Co. Cork

T: +353 (0)21 4362922
W: www.reddyarchitecture.com
E: cork@reddyarchitecture.com

DWG NO.	REVISION
P19-194C-RAU-00-00- DR-A-31740	P01



DO NOT SCALE FROM THIS DRAWING. USE FIGURED DIMENSIONS IN ALL CASES. VERIFY DIMENSIONS ON SITE AND REPORT ANY DISCREPANCIES TO THE ARCHITECTS IMMEDIATELY. THIS DRAWING IS TO BE READ IN CONJUNCTION WITH THE ARCHITECTS SPECIFICATION. © THIS DRAWING IS COPYRIGHT AND MAY ONLY BE REPRODUCED WITH THE ARCHITECT'S PERMISSION.

REV	DATE	DRN	ISSUE
P01	2020.12.04	A.Olalla	Issued for Planning

ORIGINAL SHEET SIZE = A3

NOTES

Legend

- EXISTING STRUCTURE RETAINED
- NEW PARTY WALLS
- 1 BEDRM.
- 2 BEDRM.

Apartment Scheme

Ground Floor	9 units
First Floor	17 units
Second Floor	17 units
Third Floor	17 units

Total = 60 Units
Total Floor area 5943sq.m.



Dual Aspect Unit



Total No. of 1 Bedrm. Units = 26 Units



Total No. of 2 Bedrm. Units = 34 Units

Total No. of Dual Aspect Units = 43 Units
Total No. of Single Aspect South facing units = 17 Units

PLANNING

JOB
 St. Kevin's Strategic Housing Development
 At the former St. Kevin's Hospital and Grounds
 Shanakiel, Cork

CLIENT
 Land Development Agency

DRAWING
 Proposed First Floor Plan

DATE	2020.12.04	SCALE	1:250
DRN.	A.Olalla	CHECKED	P.Mulligan



Reddy Architecture + Urbanism
 Cork Office,
 Douglas Business Centre, Carrigaline Road Douglas, Co. Cork

T: +353 (0)21 432922
 W: www.reddyarchitecture.com
 E: cork@reddyarchitecture.com

DWG NO.	REVISION
P19-194C-RAU-00-01- DR-A- 31741	P01



DO NOT SCALE FROM THIS DRAWING. USE FIGURED DIMENSIONS IN ALL CASES. VERIFY DIMENSIONS ON SITE AND REPORT ANY DISCREPANCIES TO THE ARCHITECTS IMMEDIATELY. THIS DRAWING IS TO BE READ IN CONJUNCTION WITH THE ARCHITECTS SPECIFICATION. © THIS DRAWING IS COPYRIGHT AND MAY ONLY BE REPRODUCED WITH THE ARCHITECT'S PERMISSION.

REV	DATE	DRN	ISSUE
P01	2020.12.04	A.Olalla	Issued for Planning

ORIGINAL SHEET SIZE = A3

NOTES

Legend

- EXISTING STRUCTURE RETAINED
- NEW PARTY WALLS
- 1 BEDRM.
- 2 BEDRM.

Apartment Scheme

Ground Floor	9 units
First Floor	17 units
Second Floor	17 units
Third Floor	17 units

Total = 60 Units
Total Floor area 5943sq.m.



Dual Aspect Unit



Total No. of 1 Bedrm. Units = 26 Units



Total No. of 2 Bedrm. Units = 34 Units

Total No. of Dual Aspect Units = 43 Units
Total No. of Single Aspect South facing units = 17 Units

PLANNING

JOB
St. Kevin's Strategic Housing Development
At the former St. Kevin's Hospital and Grounds
Shanakiel, Cork

CLIENT
Land Development Agency

DRAWING
Proposed Second Floor Plan

DATE	2020.12.04	SCALE	1:250
DRN.	A.Olalla	CHECKED	P.Mulligan

Reddy Architecture + Urbanism
Cork Office,
Douglas Business Centre, Carrigaline Road Douglas, Co. Cork

T: +353 (0)21 4362922
W: www.reddyarchitecture.com
E: cork@reddyarchitecture.com

DWG NO.	REVISION
P19-194C-RAU-00-02- DR-A-31742	P01



DO NOT SCALE FROM THIS DRAWING. USE FIGURED DIMENSIONS IN ALL CASES. VERIFY DIMENSIONS ON SITE AND REPORT ANY DISCREPANCIES TO THE ARCHITECTS IMMEDIATELY. THIS DRAWING IS TO BE READ IN CONJUNCTION WITH THE ARCHITECTS SPECIFICATION. © THIS DRAWING IS COPYRIGHT AND MAY ONLY BE REPRODUCED WITH THE ARCHITECT'S PERMISSION.

REV	DATE	DRN	ISSUE
P01	2020.12.04	A.Olalla	Issued for Planning

NOTES

Legend

- EXISTING STRUCTURE RETAINED
- NEW PARTY WALLS
- 1 BEDRM.
- 2 BEDRM.

Apartment Scheme

Ground Floor 9 units
First Floor 17 units
Second Floor 17 units
Third Floor 17 units

Total = 60 Units
Total Floor area 5943sq.m.

Dual Aspect Unit

Total No. of 1 Bedrm. Units = 26 Units
Total No. of 2 Bedrm. Units = 34 Units

Total No. of Dual Aspect Units = 43 Units
Total No. of Single Aspect South facing units = 17 Units

PLANNING

JOB
St. Kevin's Strategic Housing Development
At the former St. Kevin's Hospital and Grounds
Shanakiel, Cork

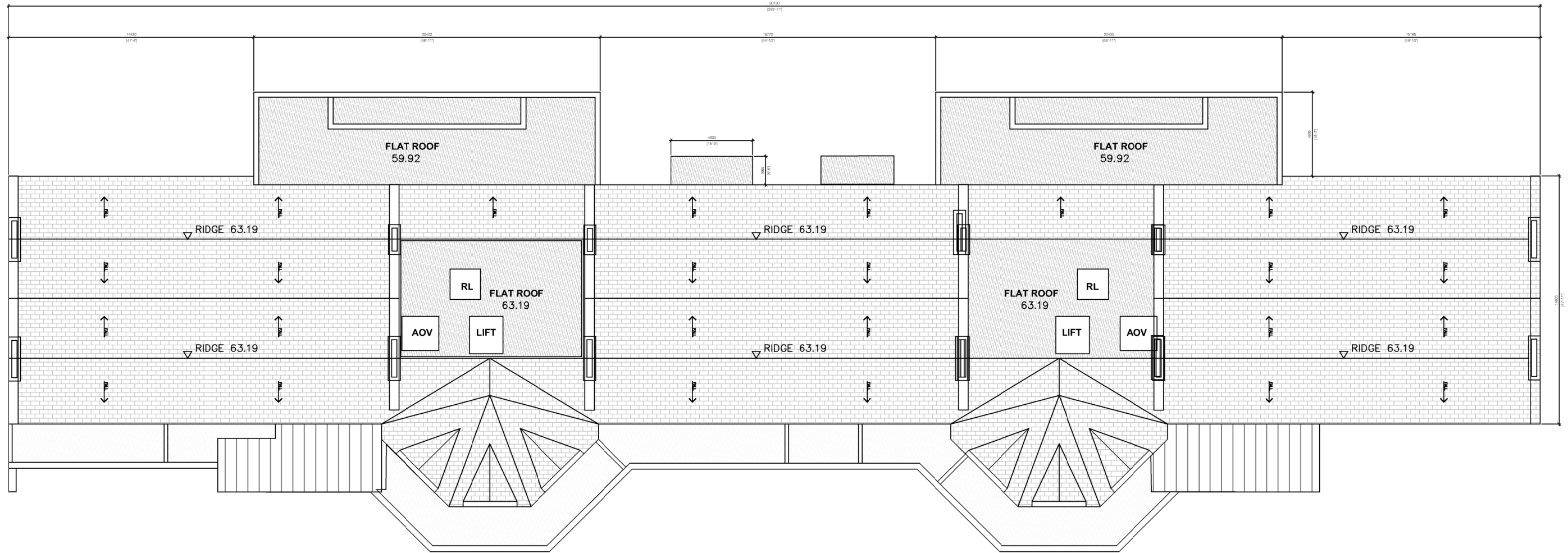
CLIENT
Land Development Agency

DRAWING
Proposed Third Floor Plan

DATE 2020.12.04	SCALE 1:250
DRN. A.Olalla	CHECKED P.Mulligan



DWG NO.	REVISION
P19-194C-RAU-00-03- DR-A- 31743	P01



DO NOT SCALE FROM THIS DRAWING. USE FIGURED DIMENSIONS IN ALL CASES. VERIFY DIMENSIONS ON SITE AND REPORT ANY DISCREPANCIES TO THE ARCHITECTS IMMEDIATELY. THIS DRAWING IS TO BE READ IN CONJUNCTION WITH THE ARCHITECTS SPECIFICATION. © THIS DRAWING IS COPYRIGHT AND MAY ONLY BE REPRODUCED WITH THE ARCHITECT'S PERMISSION.			
REV	DATE	DRN	ISSUE
P01	2020.12.04	A.Olalla	Issued for Planning

NOTES

Legend	
	EXISTING STRUCTURE RETAINED
	NEW PARTY WALLS
	1 BEDRM.
	2 BEDRM.

Apartment Scheme	
Ground Floor	9 units
First Floor	17 units
Second Floor	17 units
Third Floor	17 units
Total =	60 Units
Total Floor area	5943sq.m.

	Dual Aspect Unit
	Total No. of 1 Bedrm. Units = 26 Units
	Total No. of 2 Bedrm. Units = 34 Units
	Total No. of Dual Aspect Units = 43 Units
	Total No. of Single Aspect South facing units = 17 Units

PLANNING	
JOB St. Kevin's Strategic Housing Development At the former St. Kevin's Hospital and Grounds Shanakiel, Cork	
CLIENT Land Development Agency	
DRAWING Proposed Roof Plan	
DATE 2020.12.04	SCALE 1:250
DRN. A.Olalla	CHECKED P.Mulligan

Reddy Architecture + Urbanism Cork Office, Douglas Business Centre, Carrigaline Road Douglas, Co. Cork	
T: +353 (0)21 4362922 W: www.reddyarchitecture.com E: cork@reddyarchitecture.com	
DWG NO. P19-194C-RAU-00-RF-DR-A-31744	REVISION P01



Proposed South Elevation



Proposed North Elevation

DONOT SCALE FROM THIS DRAWING. USE FIGURED DIMENSIONS IN ALL CASES. VERIFY DIMENSIONS ON SITE AND REPORT ANY DISCREPANCIES TO THE ARCHITECTS IMMEDIATELY. THIS DRAWING IS TO BE READ IN CONJUNCTION WITH THE ARCHITECTS SPECIFICATION. © THIS DRAWING IS COPYRIGHT AND MAY ONLY BE REPRODUCED WITH THE ARCHITECTS PERMISSION.

REV	DATE	DRN	ISSUE
P01	2020.12.04	A.Olalla	Issued for Planning

ORIGINAL SHEET SIZE = A3

NOTES

Please read these drawings in conjunction with John Cronin & Associates Architectural Heritage Impact Assessment & Method statement.

Material Legend:

- Existing brick
- Existing Stone
- Selected painted / coloured render
- Natural slates
- Selected painted hardwood window/door
- Selected Aluminium / PVC window frames
- Selected anodised aluminium rainwater goods
- Selected concrete copings
- Selected painted galvanised steel railings

PLANNING

JOB
St. Kevin's Strategic Housing Development
At the former St. Kevin's Hospital and Grounds
Shanakiel, Cork

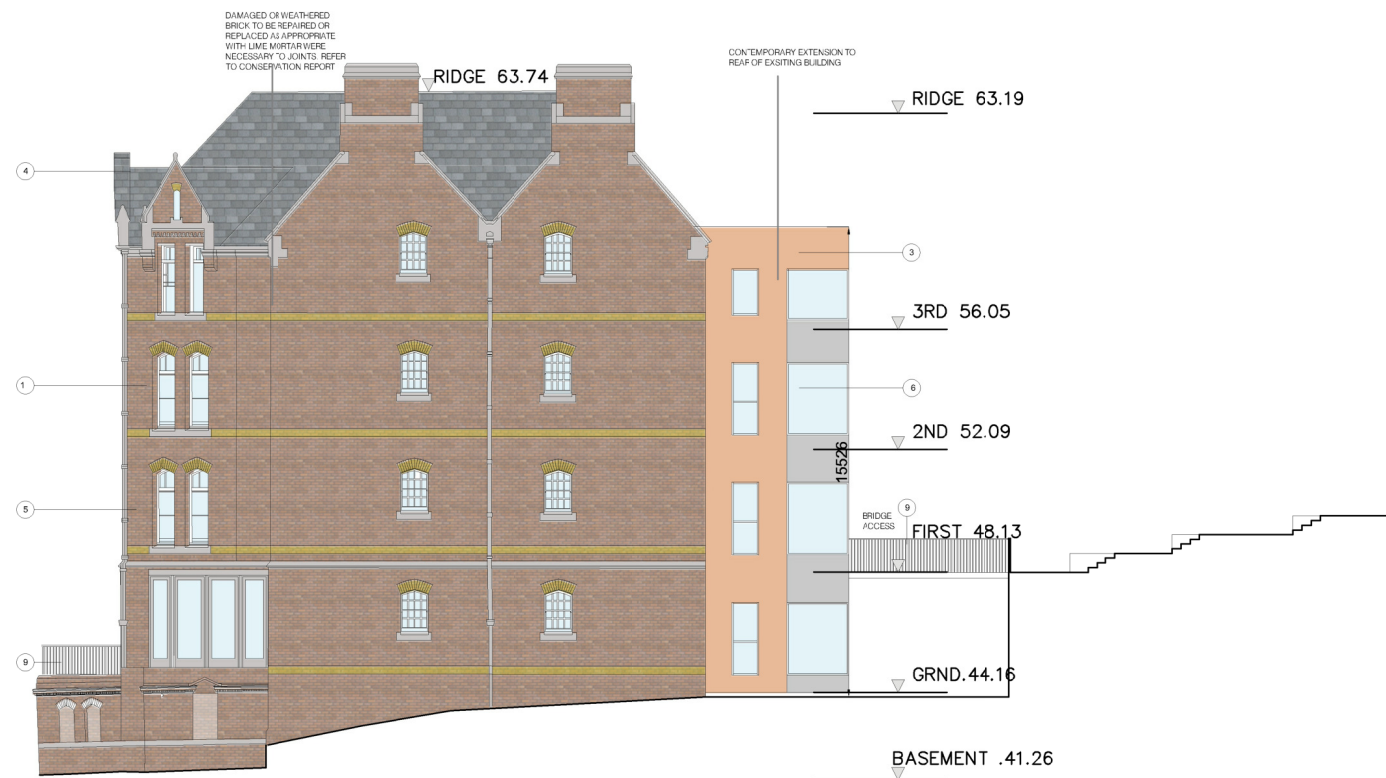
CLIENT
Land Development Agency

DRAWING
Proposed South & North Elevations

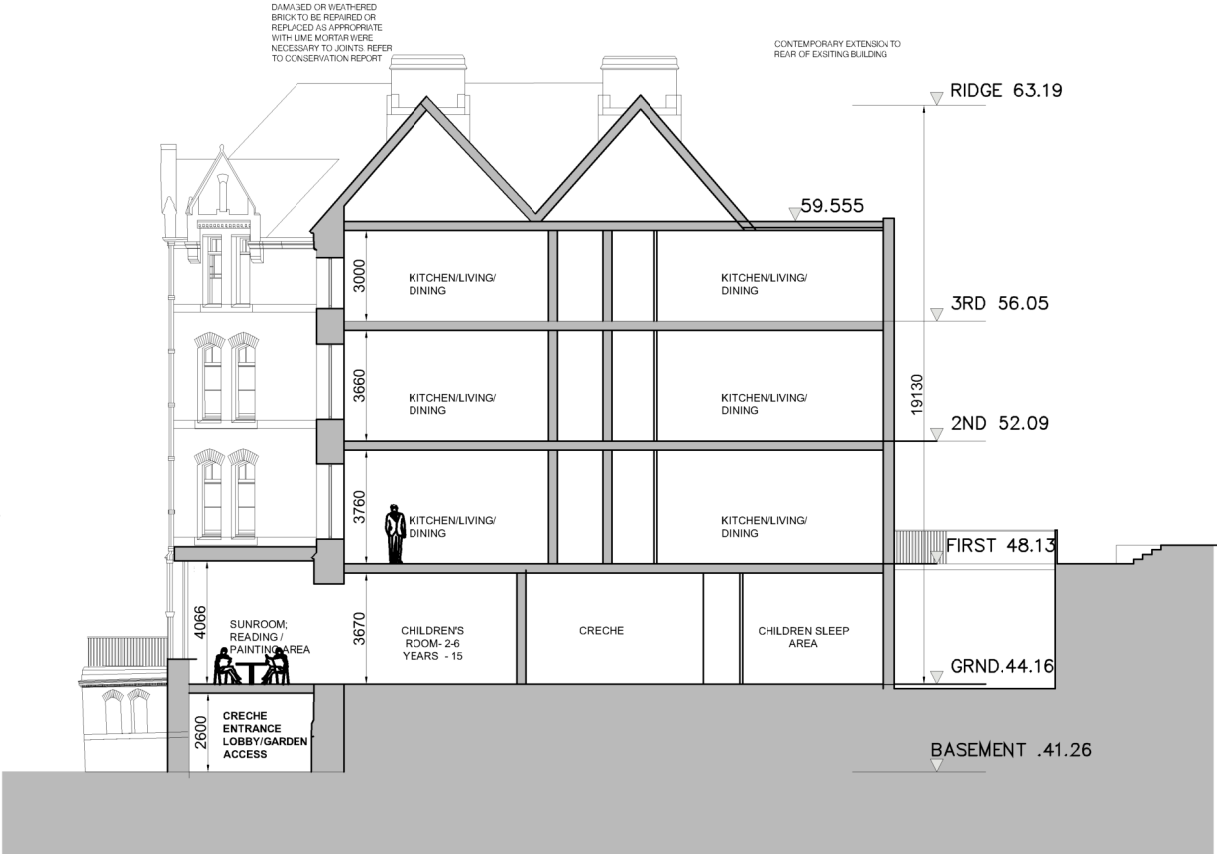
DATE	2020.12.04	SCALE	1:250
DRN	A.Olalla	CHECKED	P.Mulligan



DWG NO.	REVISION
P19-194C-RAU-00-ZZ-DR-A-32314	P01



Proposed East Elevation



Proposed West Elevation

DO NOT SCALE FROM THIS DRAWING. USE FIGURED DIMENSIONS IN ALL CASES. VERIFY DIMENSIONS ON SITE AND REPORT ANY DISCREPANCIES TO THE ARCHITECTS IMMEDIATELY. THIS DRAWING IS TO BE READ IN CONJUNCTION WITH THE ARCHITECTS SPECIFICATION. © THIS DRAWING IS COPYRIGHT AND MAY ONLY BE REPRODUCED WITH THE ARCHITECT'S PERMISSION.			
REV	DATE	DRN	ISSUE
P01	2020.12.04	A.Olalla	Issued for Planning

ORIGINAL SHEET SIZE = A3


NOTES

Please read these drawings in conjunction with John Cronin & Associates Architectural Heritage Impact Assessment & Method statement.

Material Legend:

- | | |
|--|---|
| ① Existing brick | ⑥ Selected Aluminium / PVC window frames |
| ② Existing Stone | ⑦ Selected anodised aluminium rainwater goods |
| ③ Selected painted / coloured render | ⑧ Selected concrete copings |
| ④ Natural slates | ⑨ Selected painted galvanised steel railings |
| ⑤ Selected painted hardwood window/ door | |

PLANNING	
JOB St. Kevin's Strategic Housing Development At the former St. Kevin's Hospital and Grounds Shanakiel, Cork	
CLIENT Land Development Agency	
DRAWING Proposed Section A-A, East & West Elevations	
DATE 2020.12.04	SCALE 1:250
DRN. A.Olalla	CHECKED P.Mulligan



reddyarchitecture+urbanism

Reddy Architecture + Urbanism
Cork Office,
Douglas Business Centre, Carrigaline Road Douglas, Co. Cork

T: +353 (0)21 4362922
W: www.reddyarchitecture.com
E: cork@reddyarchitecture.com

DWG NO.	REVISION
P19-194C-RAU- 00-ZZ- DR-A- 32315	P01